

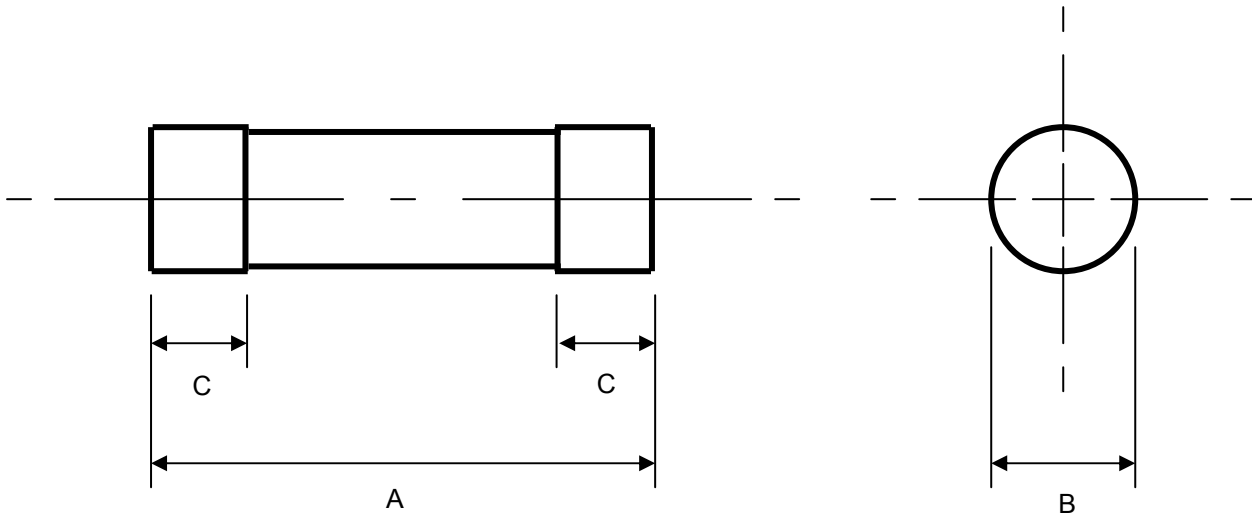
FUSEMASTERTM

1451F SERVICE FUSES

TECHNICAL SPECIFICATIONS FOR TYPES "1451F" HOUSE
SERVICE CUT-OUT FUSE LINKS COMPLYING WITH
AS2005, IEC269-1, AS/NZS 60269-2.1, GB13539.

RATED VOLTAGES	500VAC
CURRENT RATINGS	2A to 50A
RATED BREAKING CAPACITY	100kA
FUSING FACTOR	Class Q1 (not exceeding 1.5)
OUTLINE DIMENSIONS	TS007
TIME/CURRENT CHARACTERISTICS	TS008 , TS009 , TS010
CUT-OFF CHARACTERISTICS	TS011
POWER DISSIPATION VALUES	TS012
GENERAL INFORMATION	Note for application within Australia: The branding of this range of product manufactured for the Australian market changed from "Fuseco" to "FUSEMASTER" on the 1 st May 2004.

FUSEMASTER®



RATED BREAKING CAPACITY: 100kA at 500V AC

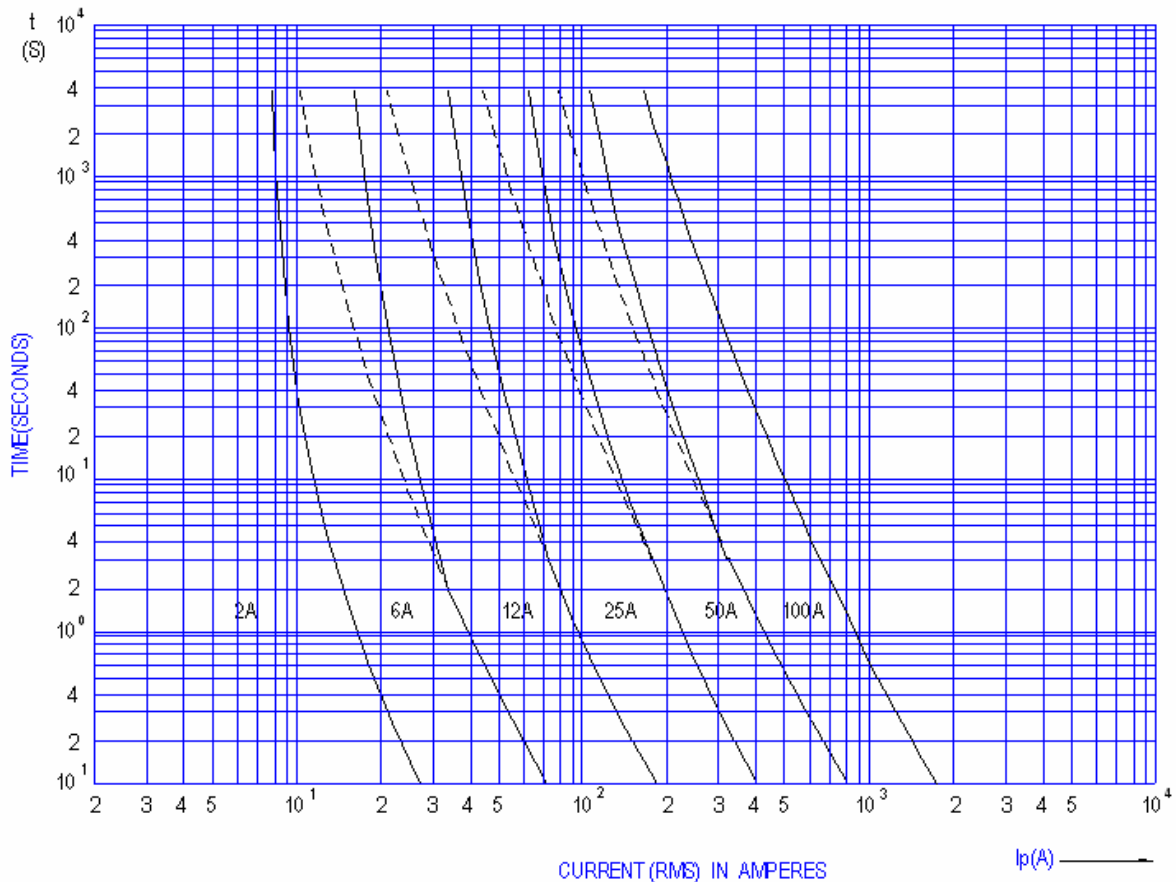
Part Number	Rated Voltage (V)	Current Rating (A)	Dimensions (mm)		
			A	B	C
1451F	500	2, 4, 6, 10, 16, 20, 25, 32, 40, 50	51 ± 0.6	12 ± 0.1	14.3 ± 0.1

OUTLINE DIMENSIONS TYPE 1451F CUT-OUT FUSE LINKS TO AS2005, IEC269-1, AS/NZS60269-2.1 & GB13539		SCALE	-
		DATE	01/02/2005
		DRAWN	TECH-GAL
ART. No.	TS007 FUSEMASTER 8 COMMERCIAL ROAD MOORABBIN VICTORIA 3189 AUSTRALIA	APPROVED	GM-FUS
		ALTERATION	10/02/2006

FUSEMASTER®

CYLINDRICAL SERVICE FUSE TECHNICAL SPECIFICATIONS

TIME / CURRENT CURVES

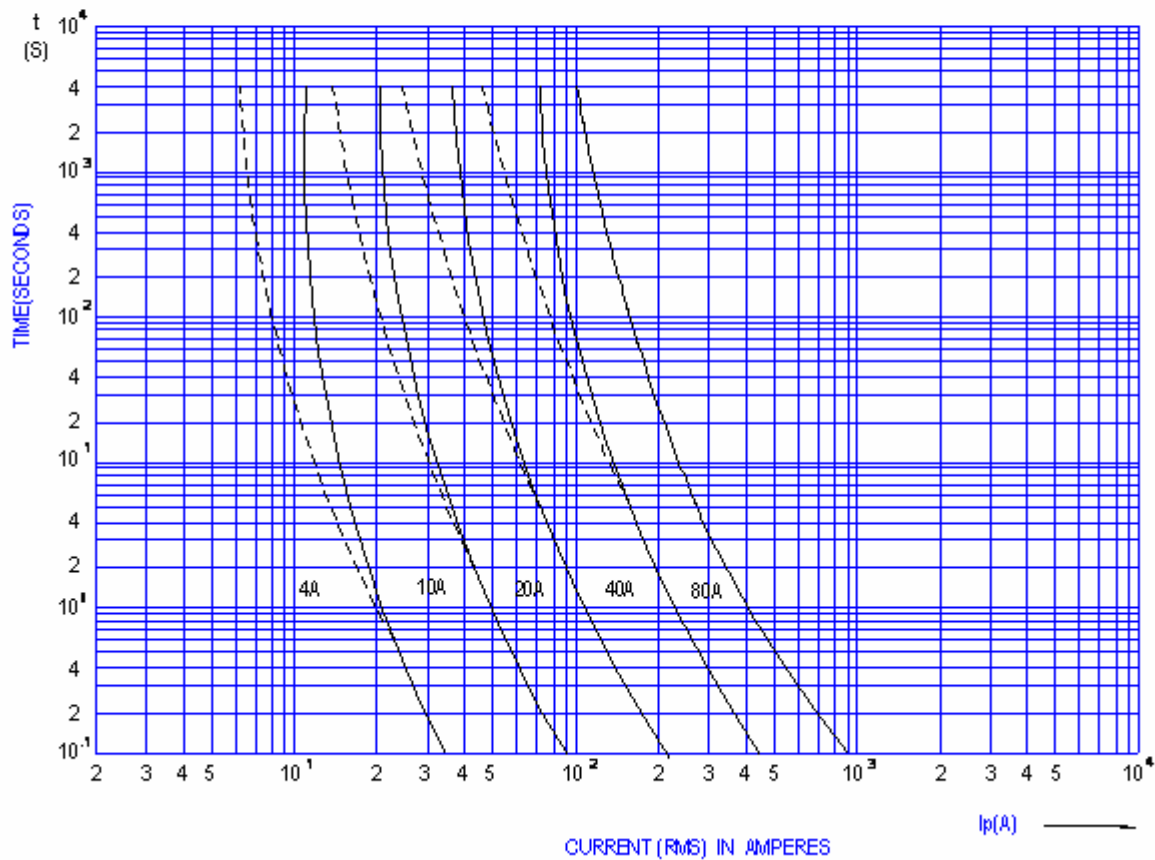


TIME / CURRENT CHARACTERISTICS 2A , 6A , 12A , 25A , 50A TYPE 1451F CUT-OUT FUSE LINKS TO AS2005, IEC269-1, AS/NZS60269-2.1 & GB13539. Note: Bold lines indicate testing to IEC269-1 & AS/NZS60269-2.1. Broken lines indicate testing under GB13539 criteria.		SCALE	-
		DATE	01/02/2005
		DRAWN	TECH-GAL
ART. No.	FUSEMASTER 8 COMMERCIAL ROAD MOORABBIN VICTORIA 3189 AUSTRALIA	APPROVED	GM-FUS
TS008		ALTERATION	10/02/2006

FUSEMASTER®

CYLINDRICAL SERVICE FUSE TECHNICAL SPECIFICATIONS

TIME / CURRENT CURVES

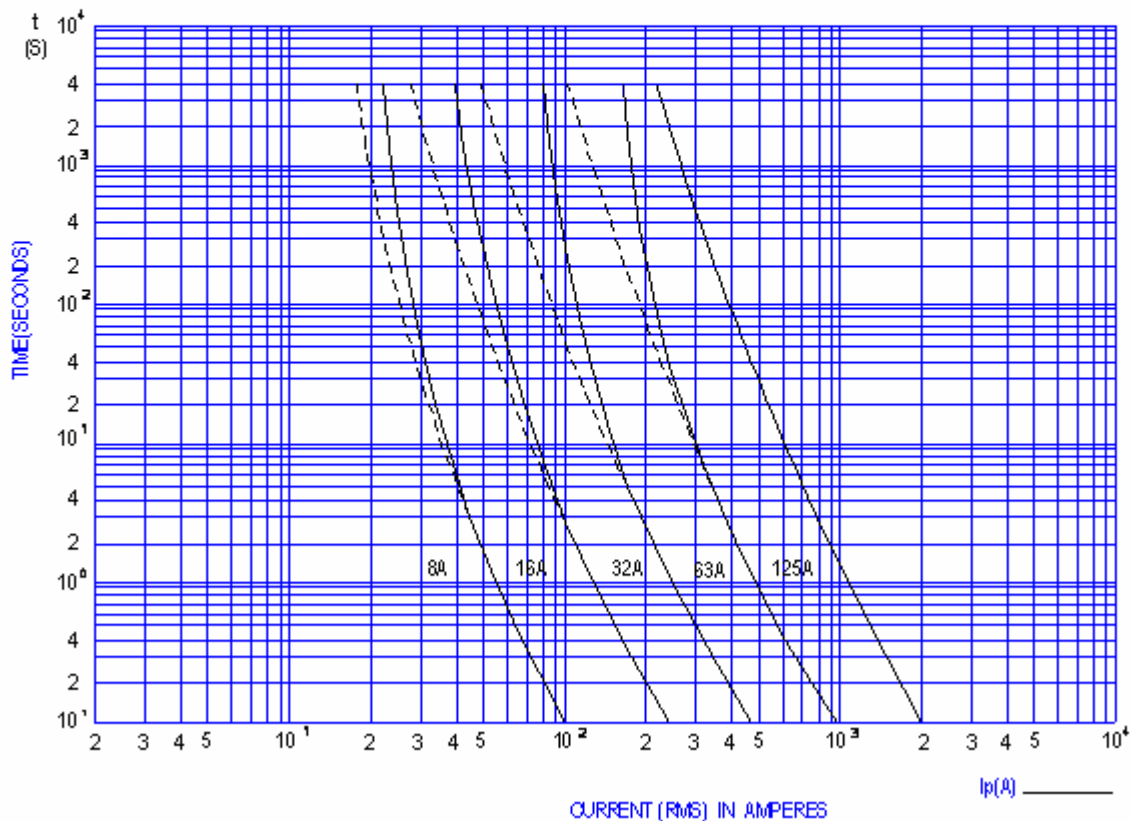


TIME / CURRENT CHARACTERISTICS 4A , 10A , 20A , 40A TYPE 1451F CUT-OUT FUSE LINKS TO AS2005, IEC269-1, AS/NZS60269-2.1 & GB13539. Note: Bold lines indicate testing to IEC269-1 & AS/NZS60269-2.1. Broken lines indicate testing under GB13539 criteria.		SCALE	-
		DATE	01/02/2005
		DRAWN	TECH-GAL
ART. No.	FUSEMASTER 8 COMMERCIAL ROAD MOORABBIN VICTORIA 3189 AUSTRALIA	APPROVED	GM-FUS
TS009		ALTERATION	10/02/2006

FUSEMASTER®

CYLINDRICAL SERVICE FUSE TECHNICAL SPECIFICATIONS

TIME / CURRENT CURVES

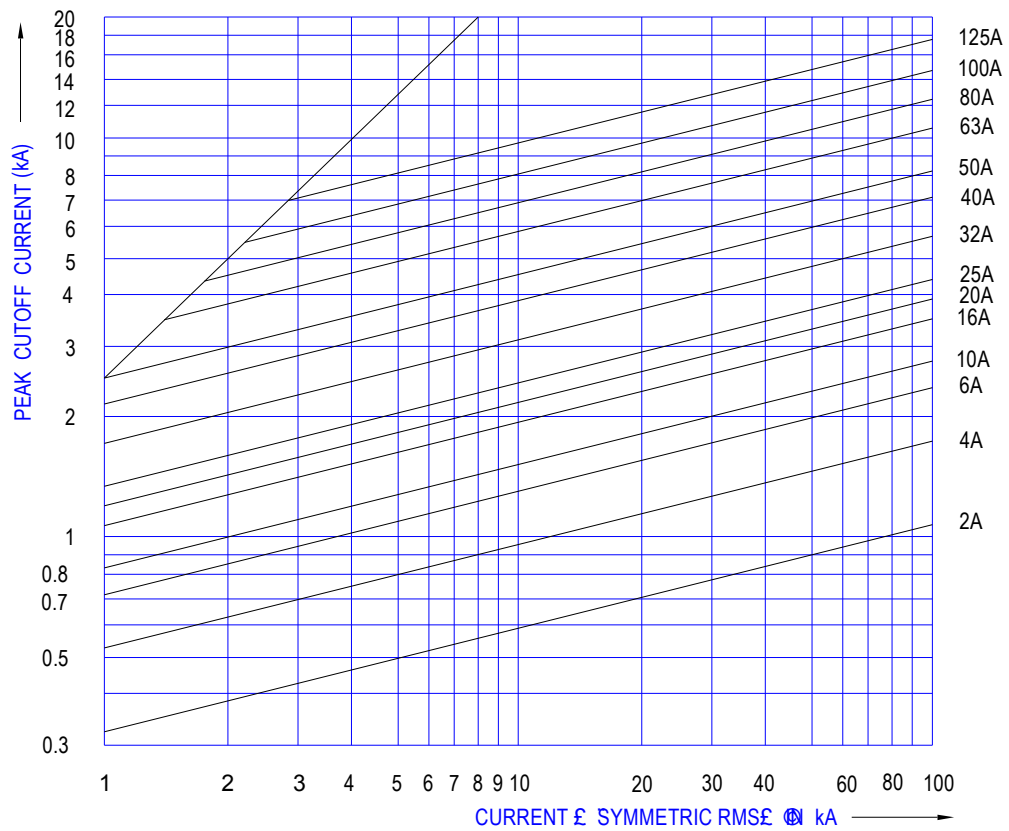


TIME / CURRENT CHARACTERISTICS 8A , 16A , 32A TYPE 1451F CUT-OUT FUSE LINKS TO AS2005, IEC269-1, AS/NZS60269-2.1 & GB13539. Note: Bold lines indicate testing to IEC269-1 & AS/NZS60269-2.1. Broken lines indicate testing under GB13539 criteria.		SCALE	-
		DATE	01/02/2005
ART. No.		DRAWN	TECH-GAL
TS010	FUSEMASTER 8 COMMERCIAL ROAD MOORABBIN VICTORIA 3189 AUSTRALIA	APPROVED	GM-FUS
		ALTERATION	10/02/2006

FUSEMASTER®

CYLINDRICAL SERVICE FUSE TECHNICAL SPECIFICATIONS

PEAK CUTOFF VALUES



PEAK CUT-OFF VALUES TYPE 1451F CUT-OUT FUSE LINKS TO AS2005, IEC269-1 & AS/NZS60269-2.1		SCALE	-
		DATE	01/02/2005
		DRAWN	TECH-GAL
ART. No.	FUSEMASTER 8 COMMERCIAL ROAD MOORABBIN VICTORIA 3189 AUSTRALIA	APPROVED	GM-FUS
TS011		ALTERATION	-

FUSEMASTER®

Part Number	Breaking Capacity (kA @ 500VAC)	Power Dissipation (W)	Unit Weight (g)
1451F-2	100	5	20.9
1451F-4	100	5	20.9
1451F-6	100	5	20.9
1451F-10	100	5	20.9
1451F-16	100	5	20.9
1451F-20	100	5	21
1451F-25	100	5	21
1451F-32	100	5	21
1451F-40	100	5	21
1451F-50	100	5	21.1

POWER DISSIPATION VALUES TYPE 1451F CUT-OUT FUSE LINKS TO AS2005, IEC269-1 & AS/NZS60269-2.1		SCALE	-
		DATE	01/02/2005
		DRAWN	TECH-GAL
ART. No.	FUSEMASTER 8 COMMERCIAL ROAD MOORABBIN VICTORIA 3189 AUSTRALIA	APPROVED	GM-FUS
TS012		ALTERATION	-