

FUSEMASTERTM

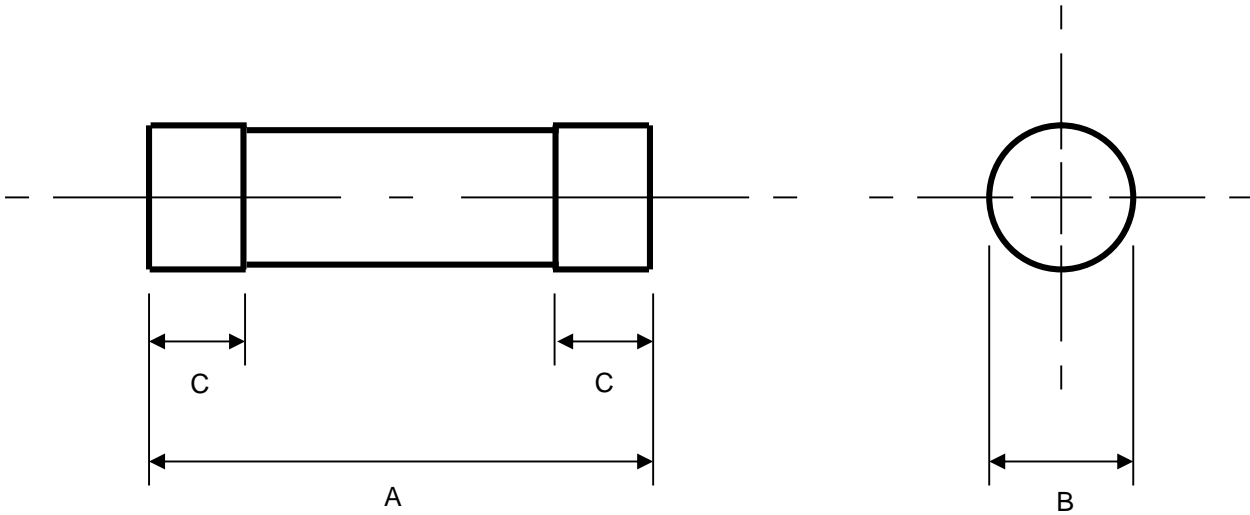
3057F SERVICE FUSES

TECHNICAL SPECIFICATIONS FOR TYPES "3057F" HOUSE
SERVICE CUT-OUT FUSE LINKS COMPLYING WITH
AS2005, IEC269-1, AS/NZS 60269-2.1

RATED VOLTAGES	500VAC
CURRENT RATINGS	30A to 125A
RATED BREAKING CAPACITY	100kA
FUSING FACTOR	Class Q1 (not exceeding 1.5)
OUTLINE DIMENSIONS	TS013
TIME/CURRENT CHARACTERISTICS	TS014 , TS015 , TS016
CUT-OFF CHARACTERISTICS	TS017
POWER DISSIPATION VALUES	TS018

Note : This range has been tested to 500VAC.
 This range supersedes the previous range that was tested to 415VAC.

FUSEMASTER®



RATED BREAKING CAPACITY: 100kA at 500V AC

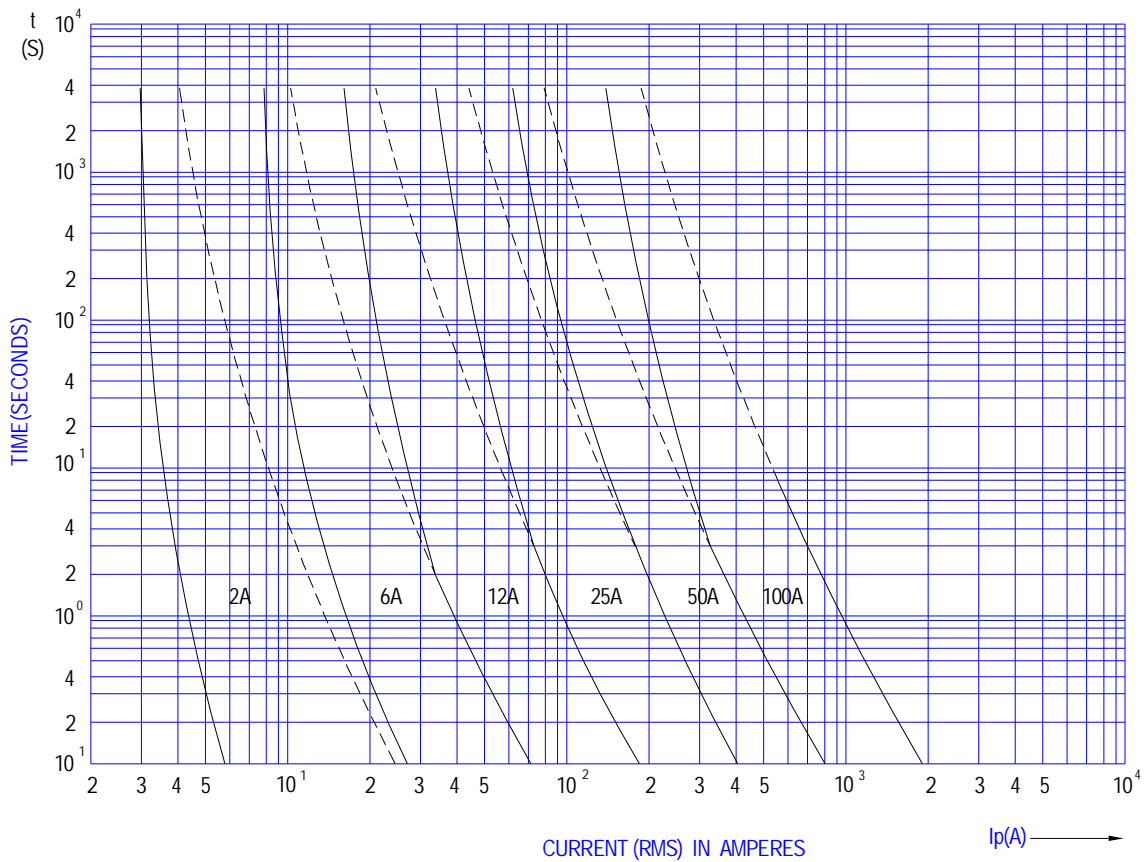
Part Number	Rated Voltage (V)	Current Rating (A)	Dimensions (mm)		
			A	B	C
3057F	500	30, 40, 50, 60, 80, 100, 125	57 ± 0.2	30.1 ± 0.1	16 ± 0.1

OUTLINE DIMENSIONS TYPE 3057F CUT-OUT FUSE LINKS TO AS2005, IEC269-1 & AS/NZS60269-2.1		SCALE	-
		DATE	01/02/2005
		DRAWN	TECH-GAL
ART. No.	FUSEMASTER 8 COMMERCIAL ROAD MOORABBIN VICTORIA 3189 AUSTRALIA	APPROVED	GM-FUS
TS013		ALTERATION	-

FUSEMASTER®

CYLINDRICAL SERVICE FUSE TECHNICAL SPECIFICATIONS

TIME / CURRENT CURVES

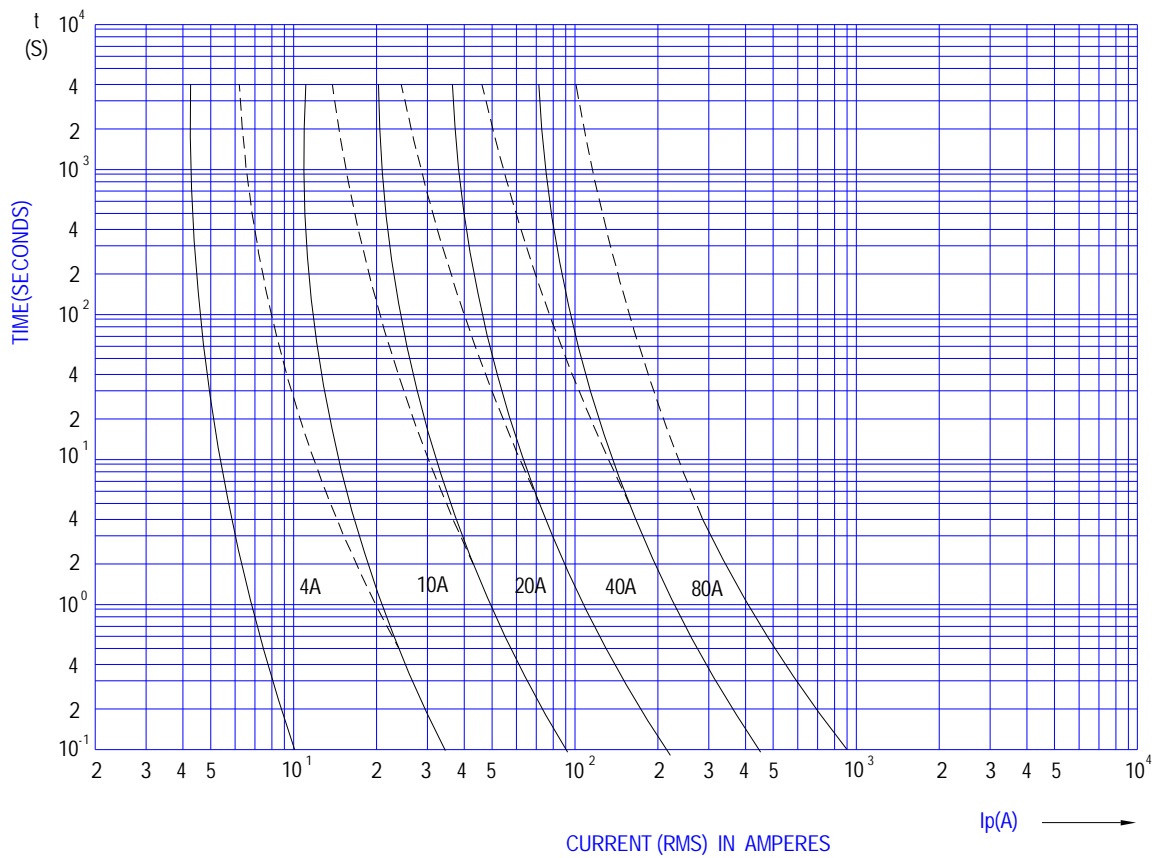


TIME / CURRENT CHARACTERISTICS 50A , 100A TYPE 3057F CUT-OUT FUSE LINKS TO AS2005, IEC269-1 & AS/NZS60269-2.1		SCALE	-
		DATE	01/02/2005
		DRAWN	TECH-GAL
ART. No.	FUSEMASTER 8 COMMERCIAL ROAD MOORABBIN VICTORIA 3189 AUSTRALIA	APPROVED	GM-FUS
TS014		ALTERATION	-

FUSEMASTER®

CYLINDRICAL SERVICE FUSE TECHNICAL SPECIFICATIONS

TIME / CURRENT CURVES

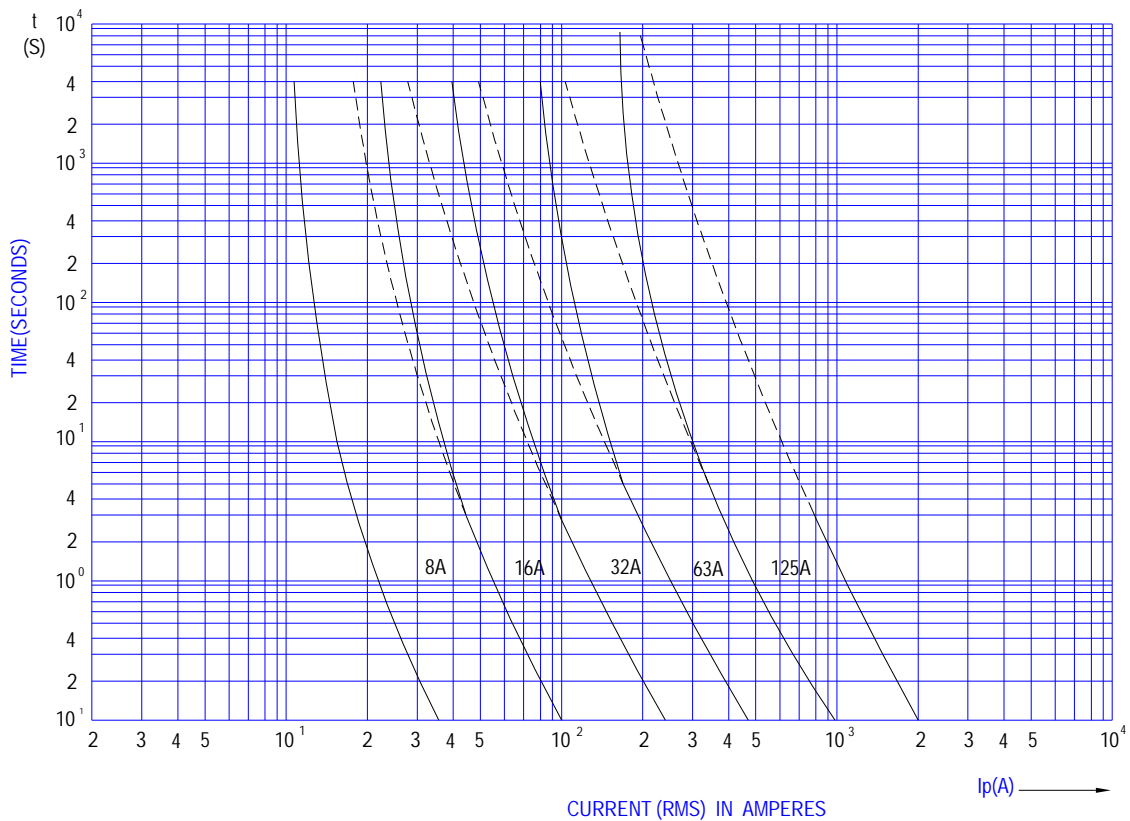


TIME / CURRENT CHARACTERISTICS 40A , 80A TYPE 3057F CUT-OUT FUSE LINKS TO AS2005, IEC269-1 & AS/NZS60269-2.1		SCALE	-
		DATE	01/02/2005
		DRAWN	TECH-GAL
ART. No.	FUSEMASTER 8 COMMERCIAL ROAD MOORABBIN VICTORIA 3189 AUSTRALIA	APPROVED	GM-FUS
TS015		ALTERATION	-

FUSEMASTER[®]

CYLINDRICAL SERVICE FUSE TECHNICAL SPECIFICATIONS

TIME / CURRENT CURVES

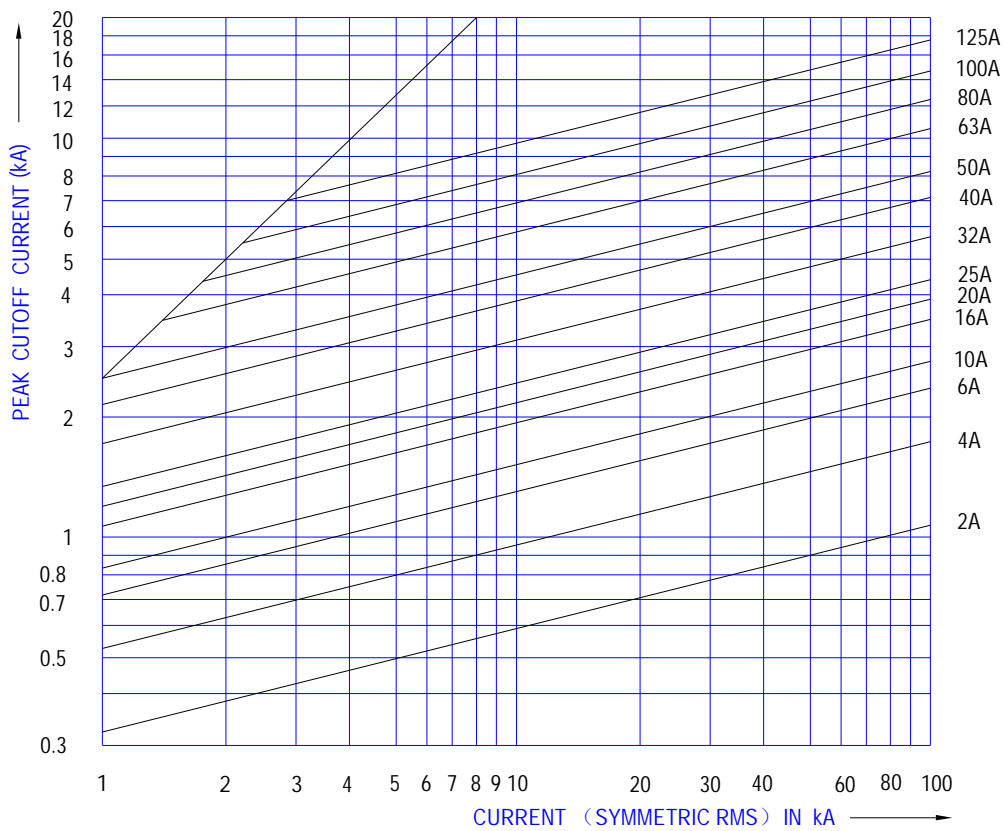


TIME / CURRENT CHARACTERISTICS 30A , 60A , 125A TYPE 3057F CUT-OUT FUSE LINKS TO AS2005, IEC269-1 & AS/NZS60269-2.1		SCALE	-
		DATE	01/02/2005
		DRAWN	TECH-GAL
ART. No.	TS016 FUSEMASTER 8 COMMERCIAL ROAD MOORABBIN VICTORIA 3189 AUSTRALIA	APPROVED	GM-FUS
		ALTERATION	-

FUSEMASTER®

CYLINDRICAL SERVICE FUSE TECHNICAL SPECIFICATIONS

PEAK CUTOFF VALUES



PEAK CUT-OFF VALUES TYPE 3057F CUT-OUT FUSE LINKS TO AS2005, IEC269-1 & AS/NZS60269-2.1		SCALE	-
		DATE	01/02/2005
		DRAWN	TECH-GAL
ART. No.	FUSEMASTER 8 COMMERCIAL ROAD MOORABBIN VICTORIA 3189 AUSTRALIA	APPROVED	GM-FUS
TS017		ALTERATION	-

FUSEMASTER*

Part Number	Breaking Capacity (kA @ 500VAC)	Power Dissipation (W)	Unit Weight (g)
3057F-30	100	14	95.9
3057F-40	100	14	95.9
3057F-50	100	14	95.9
3057F-60	100	14	96
3057F-80	100	14	96
3057F-100	100	14	96
3057F-125	100	14	96

POWER DISSIPATION VALUES TYPE 3057F CUT-OUT FUSE LINKS TO AS2005, IEC269-1 & AS/NZS60269-2.1		SCALE	-
		DATE	01/02/2005
		DRAWN	TECH-GAL
ART. No.	FUSEMASTER 8 COMMERCIAL ROAD MOORABBIN VICTORIA 3189 AUSTRALIA	APPROVED	GM-FUS
TS018		ALTERATION	-