

FUSEMASTERTM

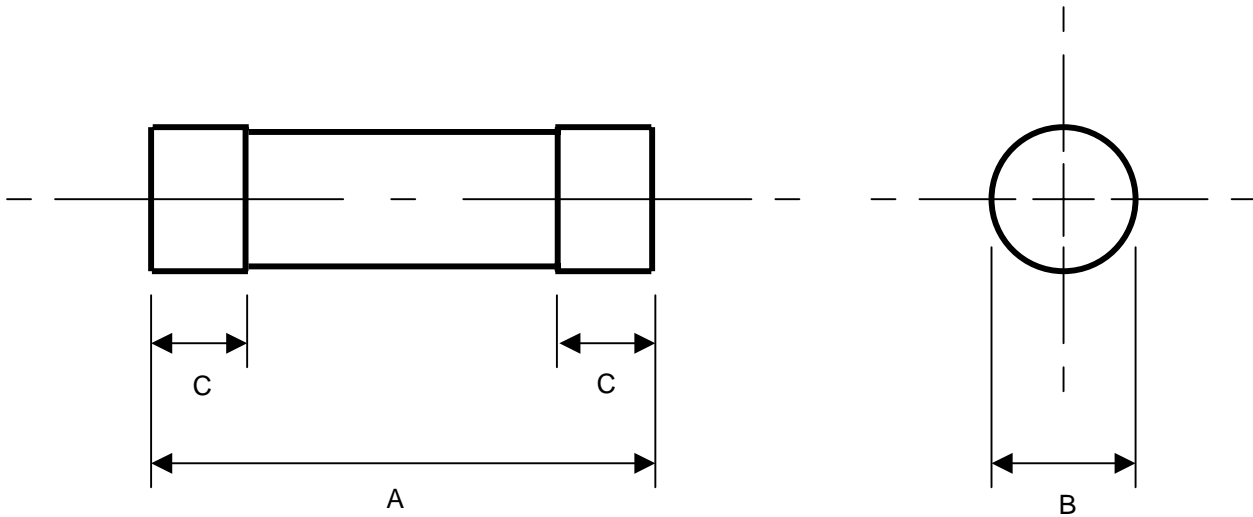
1751F SERVICE FUSES

TECHNICAL SPECIFICATIONS FOR TYPES "1751F" SERVICE
CUT-OUT FUSE LINKS COMPLYING WITH
AS2005, IEC269-1, AS/NZS 60269-2.1

RATED VOLTAGES	500VAC
CURRENT RATINGS	2A to 63A
RATED BREAKING CAPACITY	100kA
FUSING FACTOR	Class Q1 (not exceeding 1.5)
OUTLINE DIMENSIONS	TS025
TIME/CURRENT CHARACTERISTICS	TS026 , TS027 , TS028
CUT-OFF CHARACTERISTICS	TS029
POWER DISSIPATION VALUES	TS030

Note : This range has been tested to 500VAC.
 This range supersedes the previous range that was tested to 415VAC.

FUSEMASTER®



RATED BREAKING CAPACITY : 100kA at 500V AC

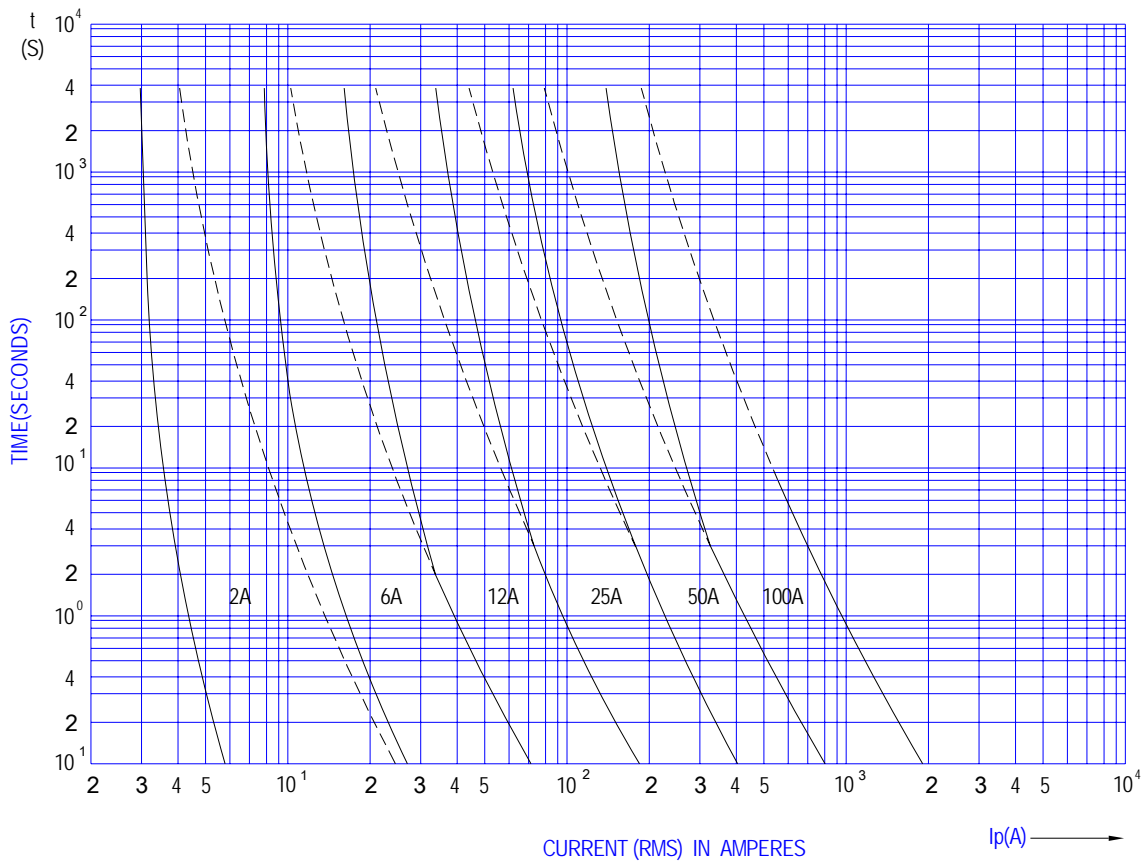
Part Number	Rated Voltage (V)	Current Rating (A)	Dimensions (mm)		
			A	B	C
1751F	500	2, 4, 6, 10, 16, 20, 25, 32, 40, 50, 63	51 ± 0.6	12 ± 0.1	17 ± 0.1

OUTLINE DIMENSIONS TYPE 1751F CUT-OUT FUSE LINKS TO AS2005, IEC269-1 & AS/NZS60269-2.1		SCALE	-
		DATE	01/02/2005
		DRAWN	TECH-GAL
ART. No.	TS025 FUSEMASTER 8 COMMERCIAL ROAD MOORABBIN VICTORIA 3189 AUSTRALIA	APPROVED	GM-FUS
		ALTERATION	-

FUSEMASTER®

CYLINDRICAL SERVICE FUSE TECHNICAL SPECIFICATIONS

TIME / CURRENT CURVES

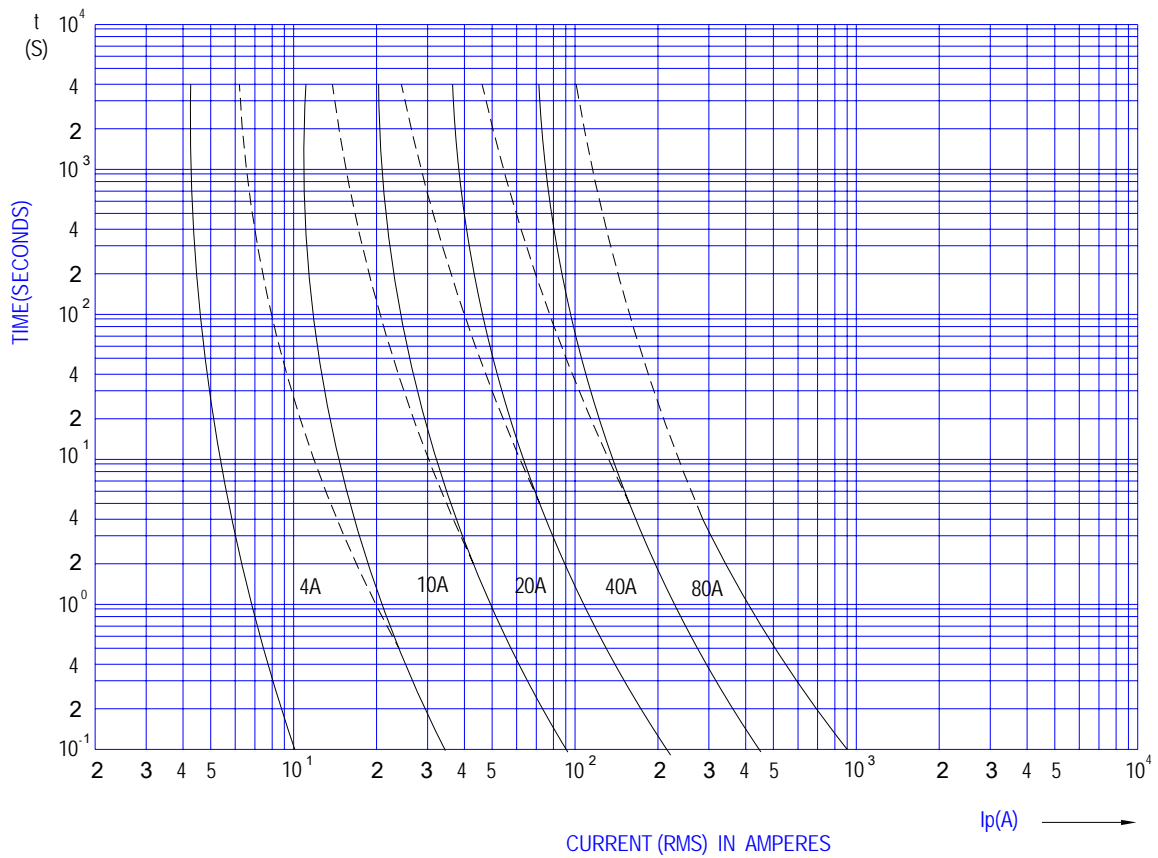


TIME / CURRENT CHARACTERISTICS 2A , 6A , 12A , 25A , 50A TYPE 1751F CUT-OUT FUSE LINKS TO AS2005, IEC269-1 & AS/NZS60269-2.1		SCALE	-
		DATE	01/02/2005
		DRAWN	TECH-GAL
ART. No.	FUSEMASTER 8 COMMERCIAL ROAD MOORABBIN VICTORIA 3189 AUSTRALIA	APPROVED	GM-FUS
<h1>TS026</h1>		ALTERATION	-

FUSEMASTER®

CYLINDRICAL SERVICE FUSE TECHNICAL SPECIFICATIONS

TIME / CURRENT CURVES

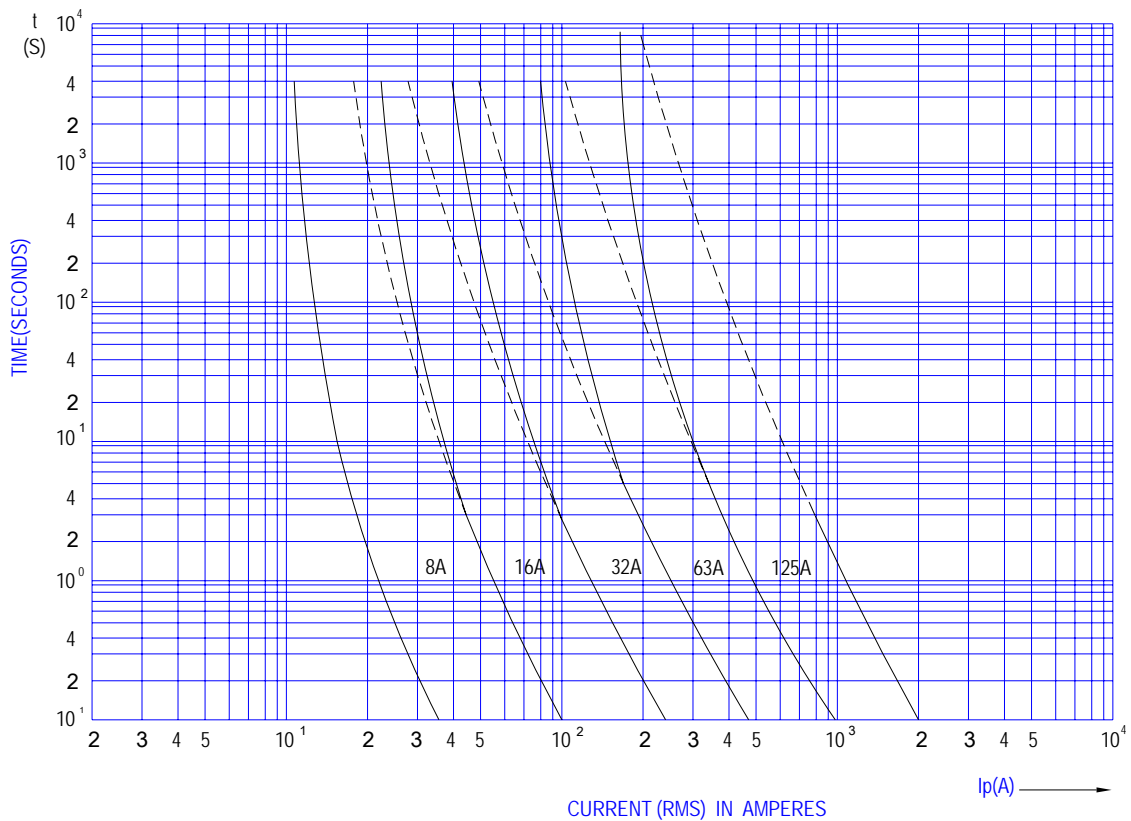


TIME / CURRENT CHARACTERISTICS 4A , 10A , 20A , 40A TYPE 1751F CUT-OUT FUSE LINKS TO AS2005, IEC269-1 & AS/NZS60269-2.1		SCALE	-
		DATE	01/02/2005
		DRAWN	TECH-GAL
ART. No.	FUSEMASTER 8 COMMERCIAL ROAD MOORABBIN VICTORIA 3189 AUSTRALIA	APPROVED	GM-FUS
TS027		ALTERATION	-

FUSEMASTER®

CYLINDRICAL SERVICE FUSE TECHNICAL SPECIFICATIONS

TIME / CURRENT CURVES

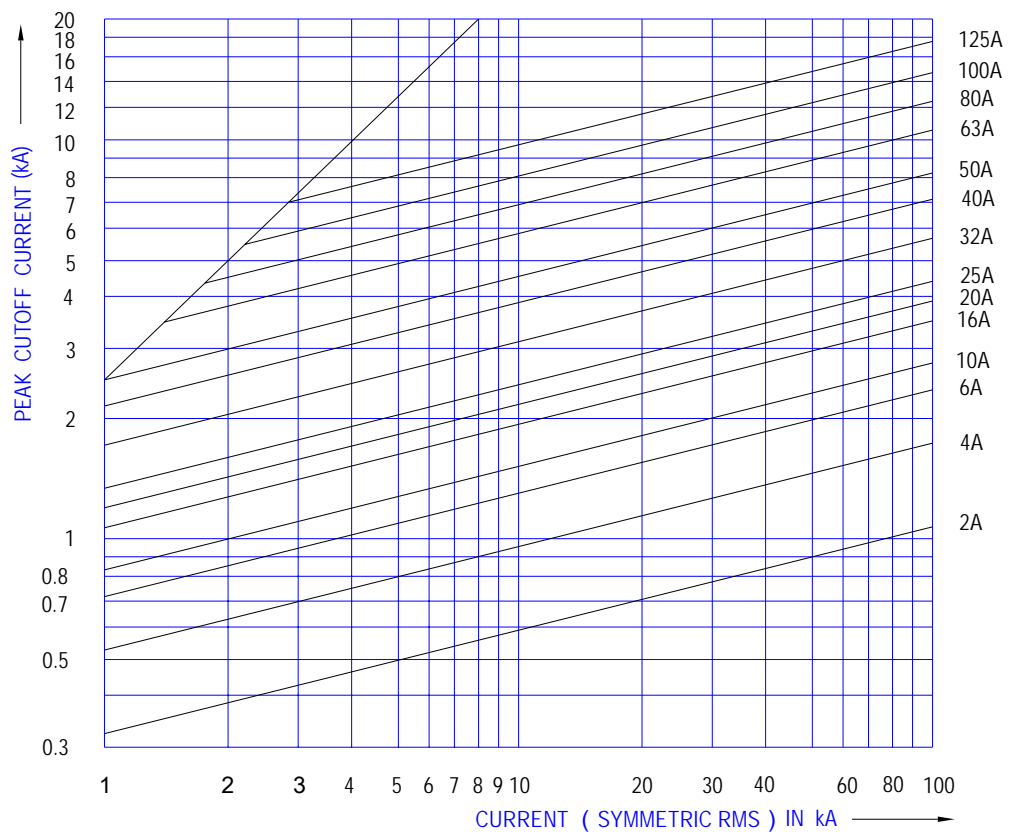


TIME / CURRENT CHARACTERISTICS 16A , 32A , 63A TYPE 1751F CUT-OUT FUSE LINKS TO AS2005, IEC269-1 & AS/NZS60269-2.1		SCALE	-
		DATE	01/02/2005
		DRAWN	TECH-GAL
ART. No.	TS028 FUSEMASTER 8 COMMERCIAL ROAD MOORABBIN VICTORIA 3189 AUSTRALIA	APPROVED	GM-FUS
		ALTERATION	-

FUSEMASTER®

CYLINDRICAL SERVICE FUSE TECHNICAL SPECIFICATIONS

PEAK CUTOFF VALUES



PEAK CUT-OFF VALUES TYPE 1751F CUT-OUT FUSE LINKS TO AS2005, IEC269-1 & AS/NZS60269-2.1		SCALE	-
		DATE	01/02/2005
		DRAWN	TECH-GAL
ART. No.	FUSEMASTER 8 COMMERCIAL ROAD MOORABBIN VICTORIA 3189 AUSTRALIA	APPROVED	GM-FUS
TS029		ALTERATION	-

FUSEMASTER®

Part Number	Breaking Capacity (kA @ 500VAC)	Power Dissipation (W)	Unit Weight (g)
1751F-2	100	5	28.9
1751F-4	100	5	28.9
1751F-6	100	5	28.9
1751F-10	100	5	28.9
1751F-16	100	5	29
1751F-20	100	5	29
1751F-25	100	5	29
1751F-32	100	5	29
1751F-40	100	5	29
1751F-50	100	5	29
1751F-63	100	5	29

POWER DISSIPATION VALUES TYPE 1751F CUT-OUT FUSE LINKS TO AS2005, IEC269-1 & AS/NZS60269-2.1		SCALE	-
		DATE	01/02/2005
		DRAWN	TECH-GAL
ART. No.	FUSEMASTER 8 COMMERCIAL ROAD MOORABBIN VICTORIA 3189 AUSTRALIA	APPROVED	GM-FUS
TS030		ALTERATION	-